
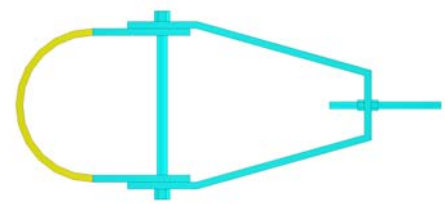


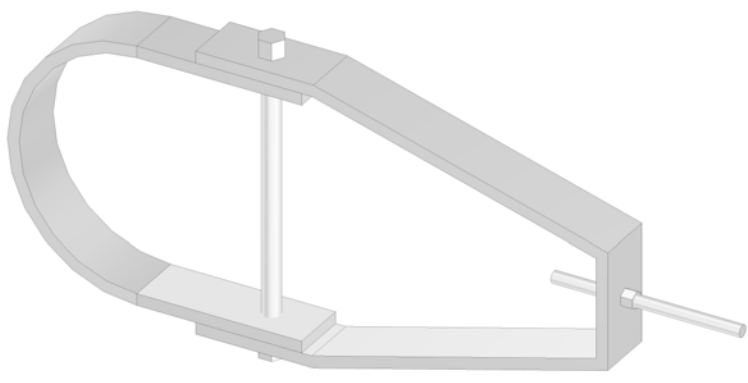

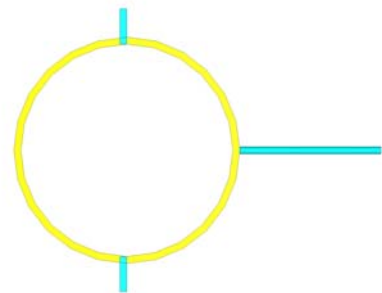

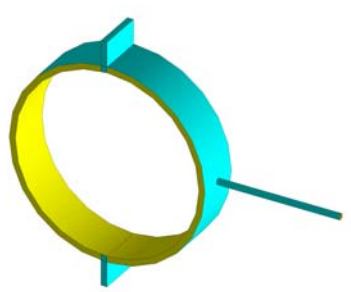


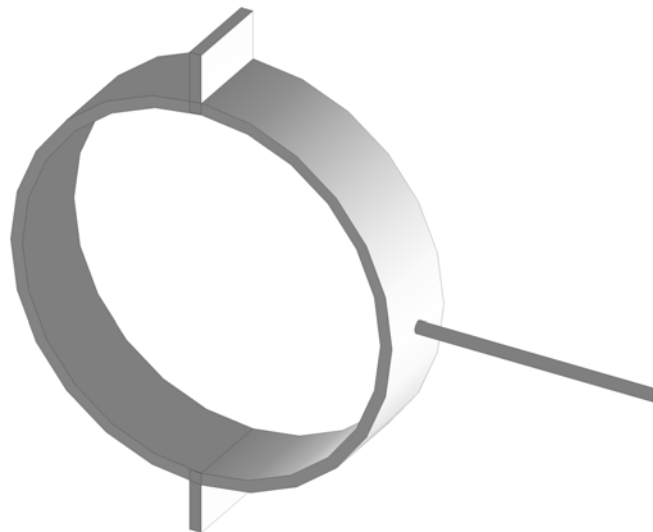
Hangers


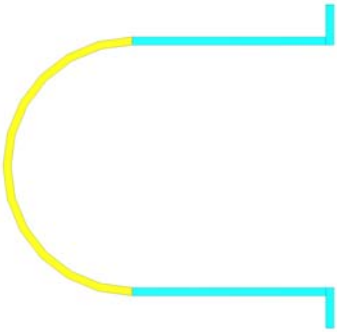

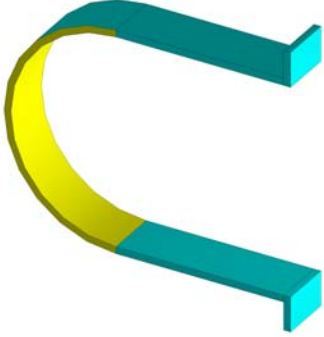
Description	CID	Cut Type	Pat Gp
Clevis	838	Equipment	Standard/Pipework
Clipped Flat Strap	838	Equipment	Round/Standard
Flat Strap	838	Equipment	Round/Standard
Rectangular Bearer	838	Equipment	Rectangular/Standard
Roll Clevis	838	Equipment	Standard/Pipework
Stirrup	838	Equipment	Round/Standard
Wrap Round	838	Equipment	Round/Standard
Roof Support (Single)	838	Equipment	Round/Standard
Roof Support (Double)	838	Equipment	Round/Standard

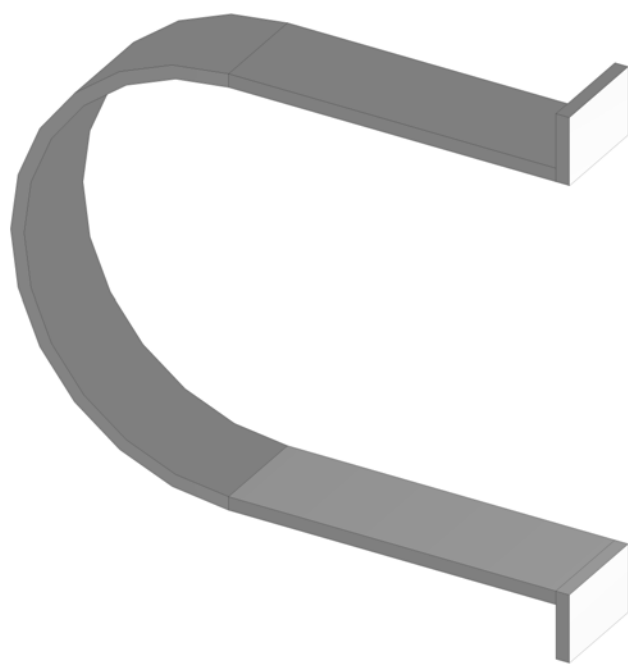
		<p style="text-align: center;">Dims</p> <p>A=Diameter B=Height C=Offset D=Top Length E=Lap F=Rod Extn Below G=Rod Extn Above</p>	
		<p style="text-align: center;">Options</p> <p>Type Profile Pipework Block Thickness Block Length Number Of Round Sections Rod Diameter Bearer Width Bearer Thickness Hex End Rod Diameter Turnover</p>	
		<p style="text-align: center;">Conn's</p> <p>C1 C2 C3</p>	<p style="text-align: center;">Seams</p>

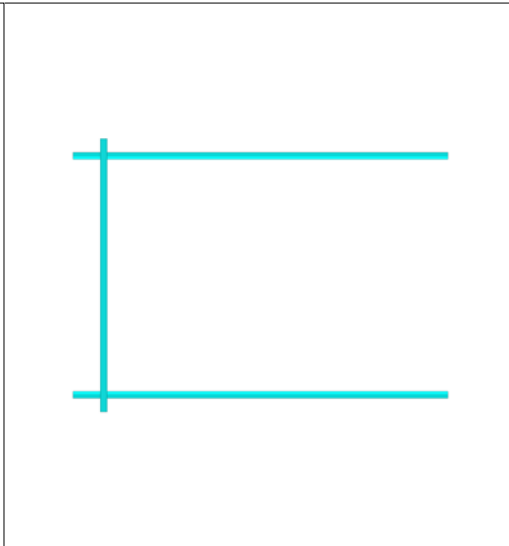
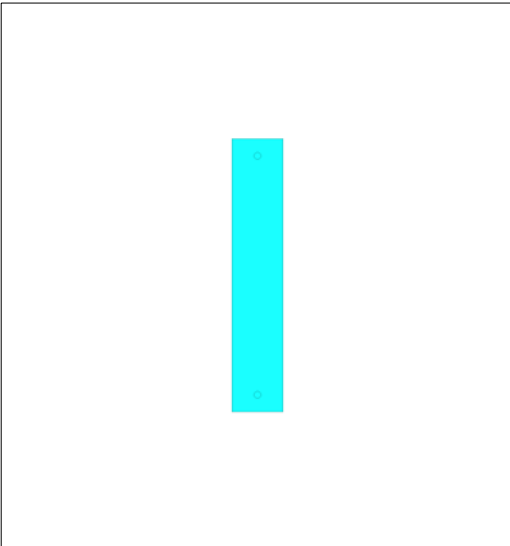


		<p style="text-align: center;">Dims</p> <p>A=Diameter B=Bearer Extn C=Rod Extn Above</p>	
		<p style="text-align: center;">Options</p> <p>Type Profile Pipework Block Thickness Block Length Number Of Round Sections Rod Diameter Bearer Width Bearer Thickness Hex End Rod Diameter Turnover</p>	
		<p style="text-align: center;">Conn's</p> <p>C1 C2 C3</p>	<p style="text-align: center;">Seams</p>



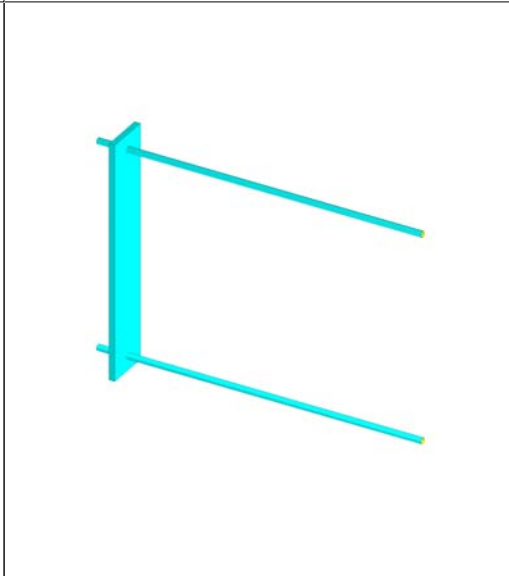
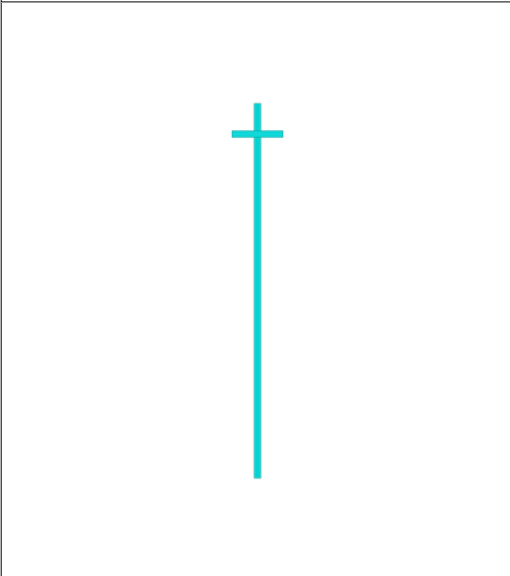
		<p style="text-align: right;">Dims</p> <p>A=Diameter B=Top Length C=Bearer Extn</p>	
		<p style="text-align: right;">Options</p> <p>Type Profile Pipework Block Thickness Block Length Number Of Round Sections Rod Diameter Bearer Width Bearer Thickness Hex End Rod Diameter Turnover</p>	
		<p style="text-align: center;">Conn's</p> <p>C1 C2 C3</p>	<p style="text-align: center;">Seams</p>





Dims

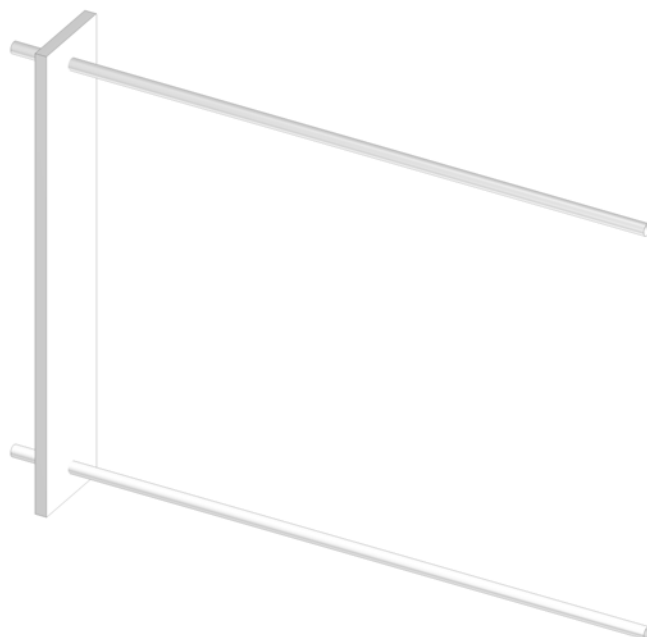
A=Width
 B=Depth
 C=Bearer Extn
 D=Left Angle
 E=Right Angle
 F=Rod Extn Above
 G=Rod Extn Below


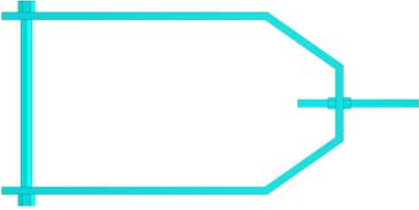

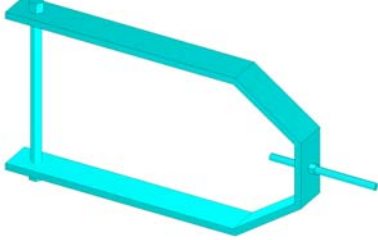


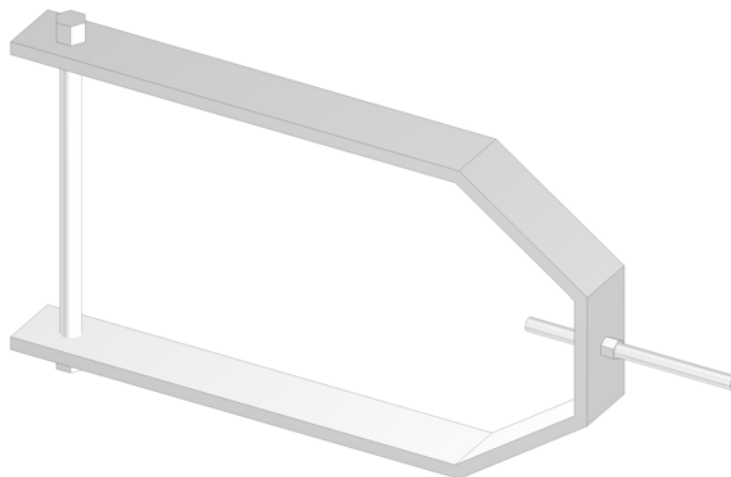
Options


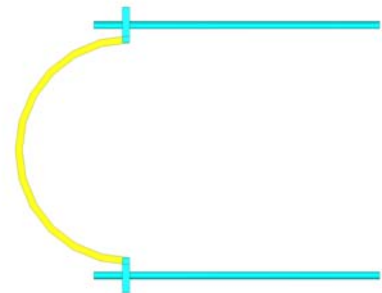
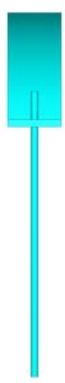
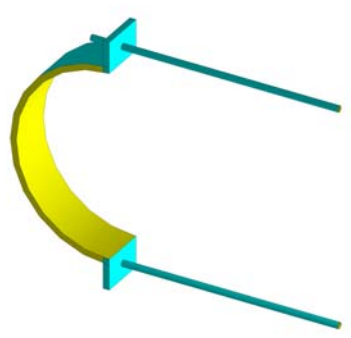
Type
 Profile
 Pipework
 Block Thickness
 Block Length
 Number Of Round Sections
 Rod Diameter
 Bearer Width
 Bearer Thickness
 Hex End
 Rod Diameter
 Turnover

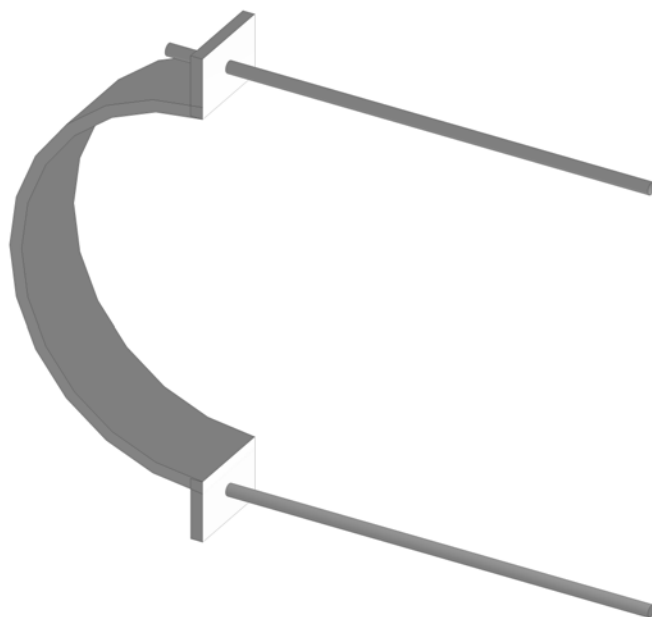
Conn's	Seams
C1	
C2	
C3	


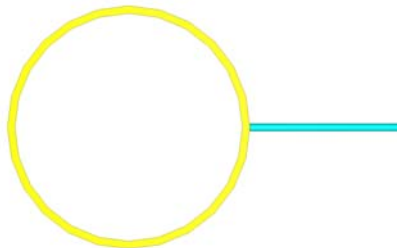

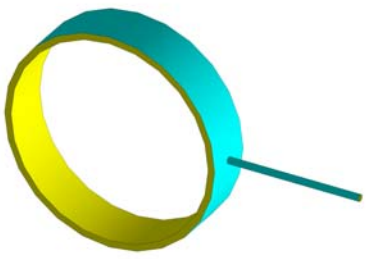


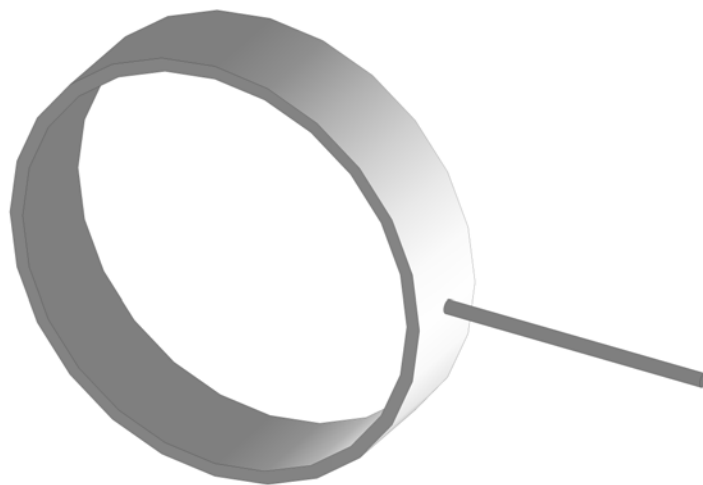
		<p style="text-align: center;">Dims</p> <p>A=Diameter B=Height C=Offset D=Top Length E=Lap F=Rod Extn Below G=Rod Extn Above</p>	
		<p style="text-align: center;">Options</p> <p>Type Profile Pipework Block Thickness Block Length Number Of Round Sections Rod Diameter Bearer Width Bearer Thickness Hex End Rod Diameter Turnover</p>	
		<p style="text-align: center;">Conn's</p> <p>C1 C2 C3</p>	<p style="text-align: center;">Seams</p>

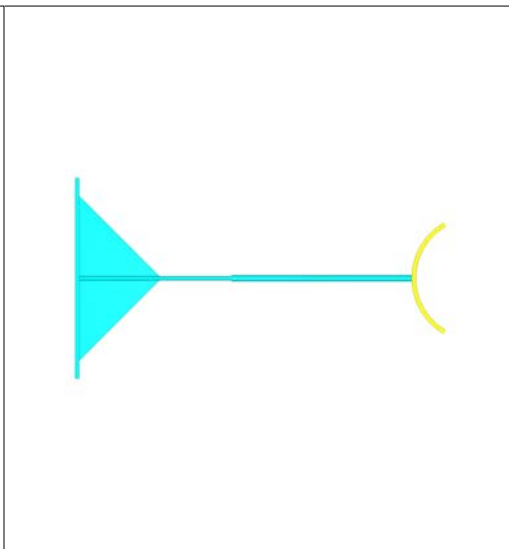
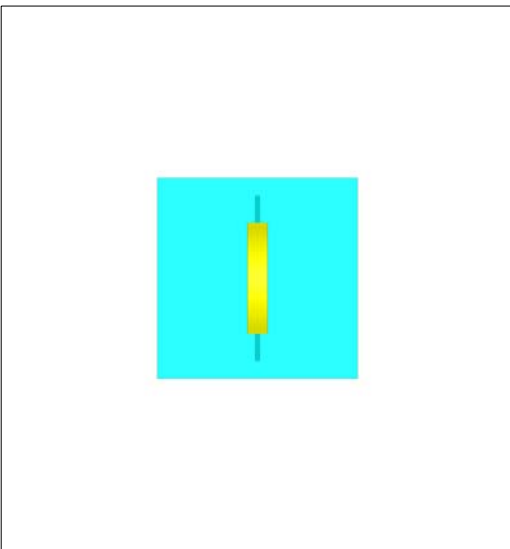


		<p style="text-align: center;">Dims</p> <p>A=Diameter B=Bearer Extn C=Rod Extn Above D=Rod Extn Below</p>	
		<p style="text-align: center;">Options</p> <p>Type Profile Pipework Block Thickness Block Length Number Of Round Sections Rod Diameter Bearer Width Bearer Thickness Hex End Rod Diameter Turnover</p>	
		<p style="text-align: center;">Conn's</p> <p>C1 C2 C3</p>	<p style="text-align: center;">Seams</p>

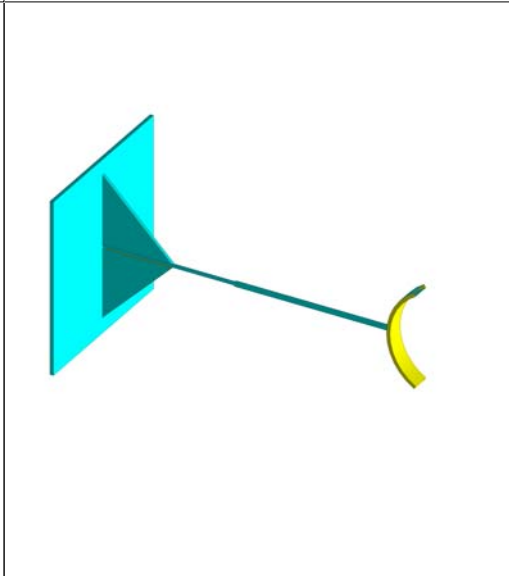
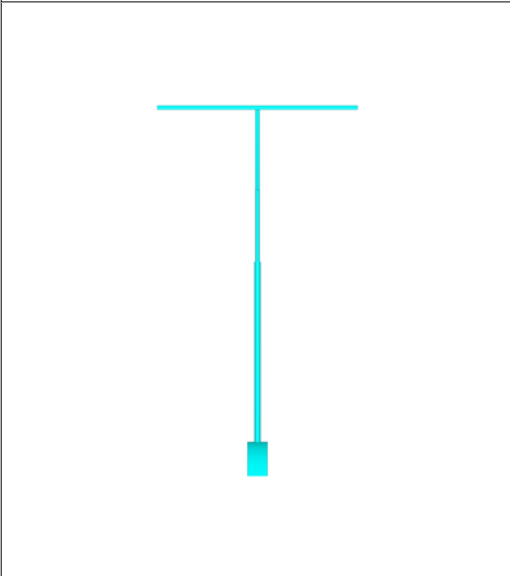


		<p style="text-align: center;">Dims</p> <p>A=Diameter B=Rod Extn Above</p>	
		<p style="text-align: center;">Options</p> <p>Type Profile Pipework Block Thickness Block Length Number Of Round Sections Rod Diameter Bearer Width Bearer Thickness Hex End Rod Diameter Turnover</p>	
		<p style="text-align: center;">Conn's</p> <p>C1 C2 C3</p>	<p style="text-align: center;">Seams</p>



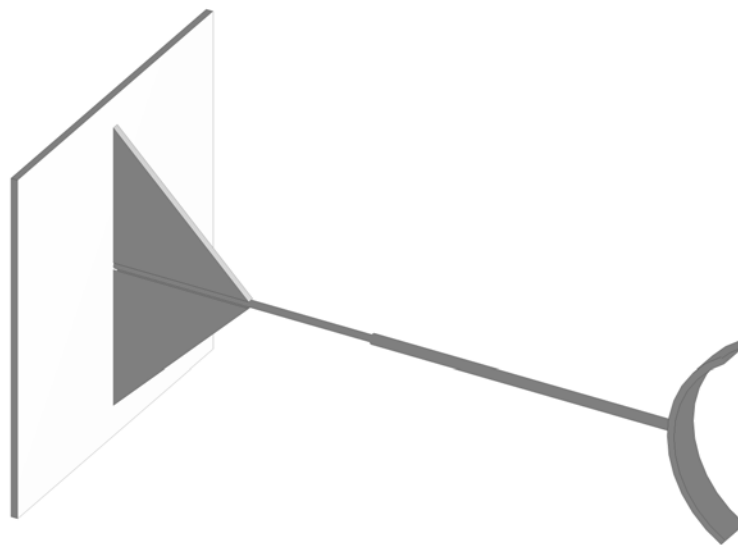


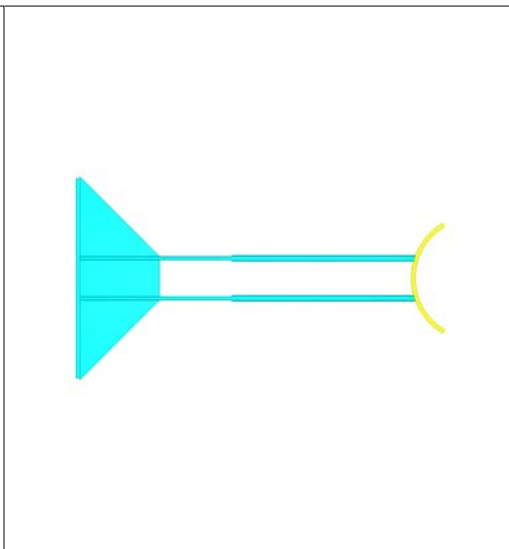
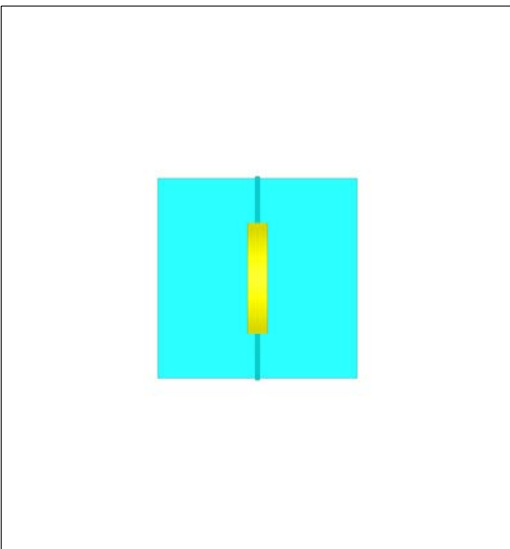
Dims	
A=Diameter	
B=Base Width	
C=Base Depth	
D=Thickness	
E=Pipe Length	
F=Centreline Length	
G=Gusset Length	
H=Gusset Height	



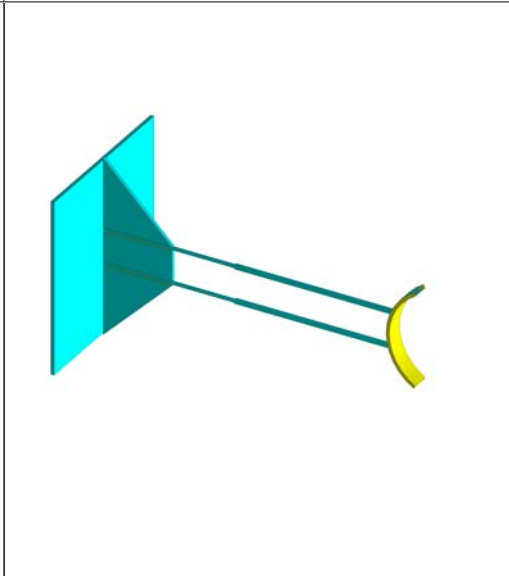
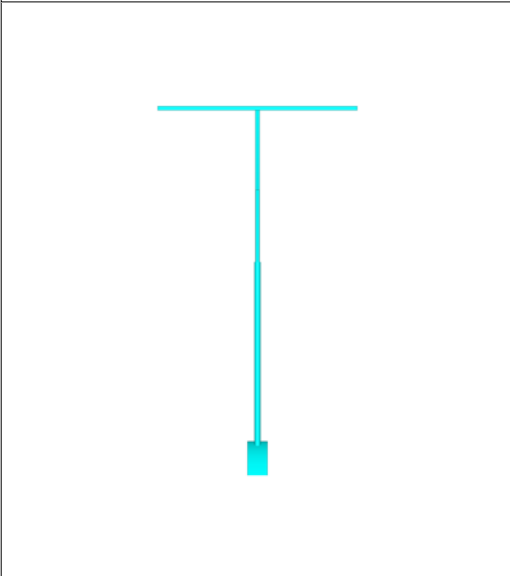
Options	
Type	
Profile	
Pipework	
Block Thickness	
Block Length	
Number Of Round Sections	
Rod Diameter	
Bearer Width	
Bearer Thickness	
Hex End	
Rod Diameter	
Turnover	

Conn's	Seams
C1	
C2	
C3	





Dims	
A=Diameter	
B=Base Width	
C=Base Depth	
D=Thickness	
E=Pipe Length	
F=Centreline Length	
G=Gusset Length	
H=Gusset Height	
I=Offset	



Options	
Type	
Profile	
Pipework	
Block Thickness	
Block Length	
Number Of Round Sections	
Rod Diameter	
Bearer Width	
Bearer Thickness	
Hex End	
Rod Diameter	
Turnover	

Conn's	Seams
C1	
C2	
C3	

