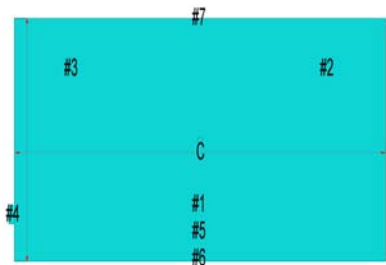
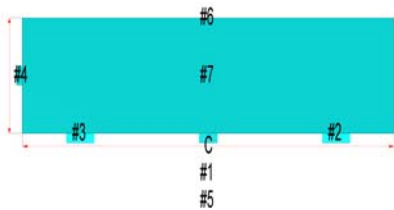


## Electrical Distribution Boards

Description	CID	Cut Type	Pat Gp
SPN A Split Load	521	Equipment	Rectangular/Standard
SPN A	521	Equipment	Rectangular/Standard
TPN B 125A	521	Equipment	Rectangular/Standard
TPN B 160-200A	521	Equipment	Rectangular/Standard
TPN B 200A	521	Equipment	Rectangular/Standard
TPN B FCS	521	Equipment	Rectangular/Standard



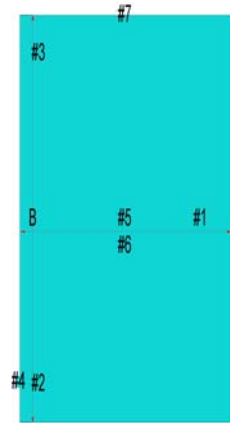
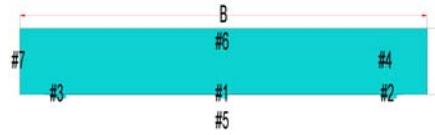


Dims	
A=Width	W=Hole Depth #4
B=Depth	X=Hole Radius #4
C=Length	Y=Inset #4
D=Hole Width #1	Z=Offset #4
E=Hole Depth #1	a=Collar #4
F=Hole Radius #1	b=Hole Width #5
G=Inset #1	c=Hole Depth #5
H=Offset #1	d=Hole Radius #5
I=Collar #1	e=Inset #5
J=Hole Width #2	f=Offset #5
K=Hole Depth #2	g=Collar #5
L=Hole Radius #2	h=Hole Width #6
M=Inset #2	i=Hole Depth #6
N=Offset #2	j=Hole Radius #6
O=Collar #2	k=Inset #6
P=Hole Width #3	l=Offset #6
Q=Hole Depth #3	m=Collar #6
R=Hole Radius #3	n=Hole Width #7
S=Inset #3	o=Hole Depth #7
T=Offset #3	p=Hole Radius #7
U=Collar #3	q=Inset #7
V=Hole Width #4	r=Offset #7

Options	
Inlet	Diameter Type
Outlet	Hole Adjust
Pipework	
Select Side	
Diameter Type	
Hole Adjust	
Select Side	
Diameter Type	
Hole Adjust	
Select Side	
Diameter Type	
Hole Adjust	
Select Side	
Diameter Type	
Hole Adjust	
Select Side	
Diameter Type	
Hole Adjust	
Select Side	

Conn's	Seams
C1	
C2	
C3	
C4	
C5	
C6	
C7	

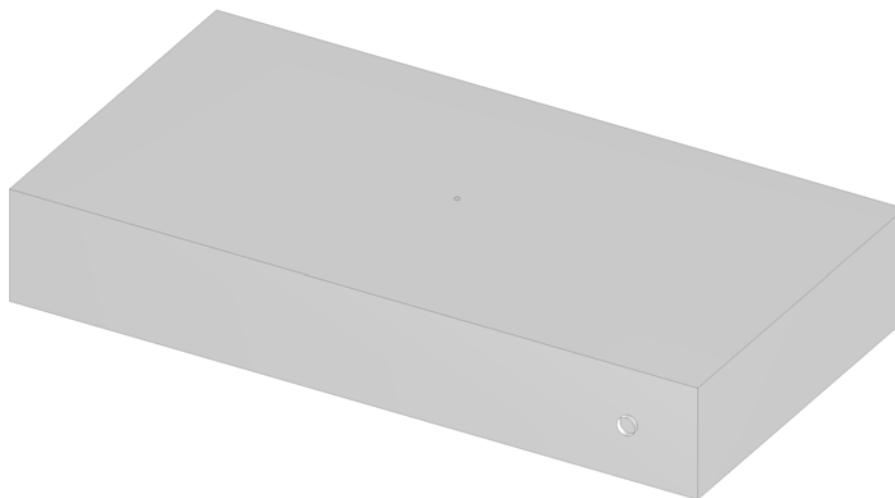


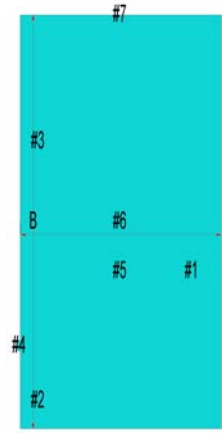
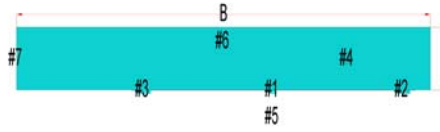
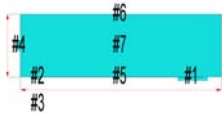


Dims	
A=Width	W=Hole Depth #4
B=Depth	X=Hole Radius #4
C=Length	Y=Inset #4
D=Hole Width #1	Z=Offset #4
E=Hole Depth #1	a=Collar #4
F=Hole Radius #1	b=Hole Width #5
G=Inset #1	c=Hole Depth #5
H=Offset #1	d=Hole Radius #5
I=Collar #1	e=Inset #5
J=Hole Width #2	f=Offset #5
K=Hole Depth #2	g=Collar #5
L=Hole Radius #2	h=Hole Width #6
M=Inset #2	i=Hole Depth #6
N=Offset #2	j=Hole Radius #6
O=Collar #2	k=Inset #6
P=Hole Width #3	l=Offset #6
Q=Hole Depth #3	m=Collar #6
R=Hole Radius #3	n=Hole Width #7
S=Inset #3	o=Hole Depth #7
T=Offset #3	p=Hole Radius #7
U=Collar #3	q=Inset #7
V=Hole Width #4	r=Offset #7

Options	
Inlet	Diameter Type
Outlet	Hole Adjust
Pipework	
Select Side	
Diameter Type	
Hole Adjust	
Select Side	
Diameter Type	
Hole Adjust	
Select Side	
Diameter Type	
Hole Adjust	
Select Side	
Diameter Type	
Hole Adjust	
Select Side	
Diameter Type	
Hole Adjust	
Select Side	

Conn's	Seams
C1	
C2	
C3	
C4	
C5	
C6	
C7	



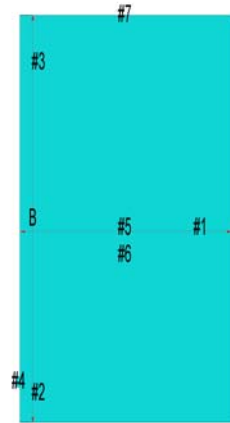


Dims	
A=Width	W=Hole Depth #4
B=Depth	X=Hole Radius #4
C=Length	Y=Inset #4
D=Hole Width #1	Z=Offset #4
E=Hole Depth #1	a=Collar #4
F=Hole Radius #1	b=Hole Width #5
G=Inset #1	c=Hole Depth #5
H=Offset #1	d=Hole Radius #5
I=Collar #1	e=Inset #5
J=Hole Width #2	f=Offset #5
K=Hole Depth #2	g=Collar #5
L=Hole Radius #2	h=Hole Width #6
M=Inset #2	i=Hole Depth #6
N=Offset #2	j=Hole Radius #6
O=Collar #2	k=Inset #6
P=Hole Width #3	l=Offset #6
Q=Hole Depth #3	m=Collar #6
R=Hole Radius #3	n=Hole Width #7
S=Inset #3	o=Hole Depth #7
T=Offset #3	p=Hole Radius #7
U=Collar #3	q=Inset #7
V=Hole Width #4	r=Offset #7

Options	
Inlet	Diameter Type
Outlet	Hole Adjust
Pipework	
Select Side	
Diameter Type	
Hole Adjust	
Select Side	
Diameter Type	
Hole Adjust	
Select Side	
Diameter Type	
Hole Adjust	
Select Side	
Diameter Type	
Hole Adjust	
Select Side	
Diameter Type	
Hole Adjust	
Select Side	

Conn's	Seams
C1	
C2	
C3	
C4	
C5	
C6	
C7	





Dims	
A=Width	W=Hole Depth #4
B=Depth	X=Hole Radius #4
C=Length	Y=Inset #4
D=Hole Width #1	Z=Offset #4
E=Hole Depth #1	a=Collar #4
F=Hole Radius #1	b=Hole Width #5
G=Inset #1	c=Hole Depth #5
H=Offset #1	d=Hole Radius #5
I=Collar #1	e=Inset #5
J=Hole Width #2	f=Offset #5
K=Hole Depth #2	g=Collar #5
L=Hole Radius #2	h=Hole Width #6
M=Inset #2	i=Hole Depth #6
N=Offset #2	j=Hole Radius #6
O=Collar #2	k=Inset #6
P=Hole Width #3	l=Offset #6
Q=Hole Depth #3	m=Collar #6
R=Hole Radius #3	n=Hole Width #7
S=Inset #3	o=Hole Depth #7
T=Offset #3	p=Hole Radius #7
U=Collar #3	q=Inset #7
V=Hole Width #4	r=Offset #7

Options	
Inlet	Diameter Type
Outlet	Hole Adjust
Pipework	
Select Side	
Diameter Type	
Hole Adjust	
Select Side	
Diameter Type	
Hole Adjust	
Select Side	
Diameter Type	
Hole Adjust	
Select Side	
Diameter Type	
Hole Adjust	
Select Side	
Diameter Type	
Hole Adjust	
Select Side	

Conn's	Seams
C1	
C2	
C3	
C4	
C5	
C6	
C7	

